

# Crown Roof Bird Home w/Cage Stand

**read first**

REVIEW BEFORE ASSEMBLY

No tools are required

For assistance or replacement parts, please contact Prevue:

**TOLL-FREE** 800.243.3624

**ONLINE** [www.prevuepet.com](http://www.prevuepet.com)

**EMAIL** [customerservice@prevuepet.com](mailto:customerservice@prevuepet.com)

Model: #262

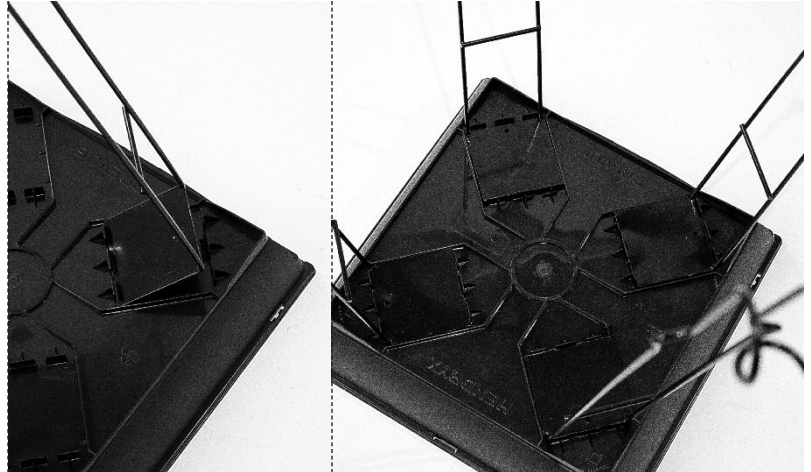
## 1 Assemble the BASE AND STAND:

Remove grille and tray from the base and turn base upside down.

Insert leg plate in the rectangle guides molded into the base:

- Catch the front of the leg plate under the clip closest to center;
- Click the back of the leg plate under the clip closest to the outer edge;
- Repeat for all legs.

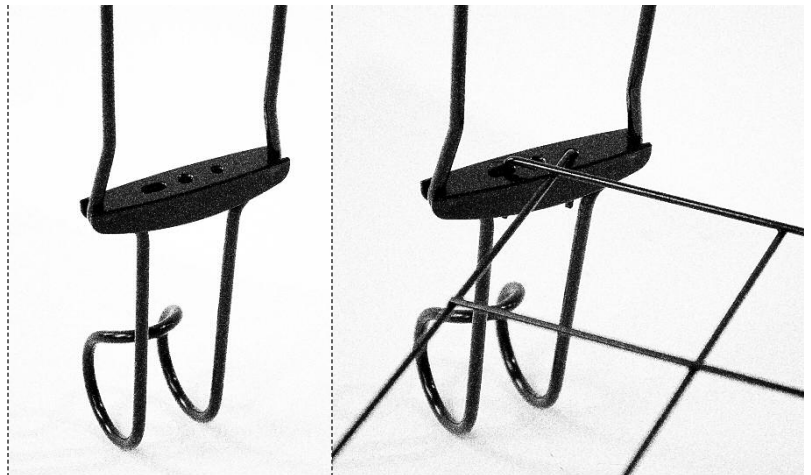
Turn base/stand unit upright.



## 2 Add the STORAGE SHELF:

Insert the plastic shelf anchors in all four legs.

Add the shelf.

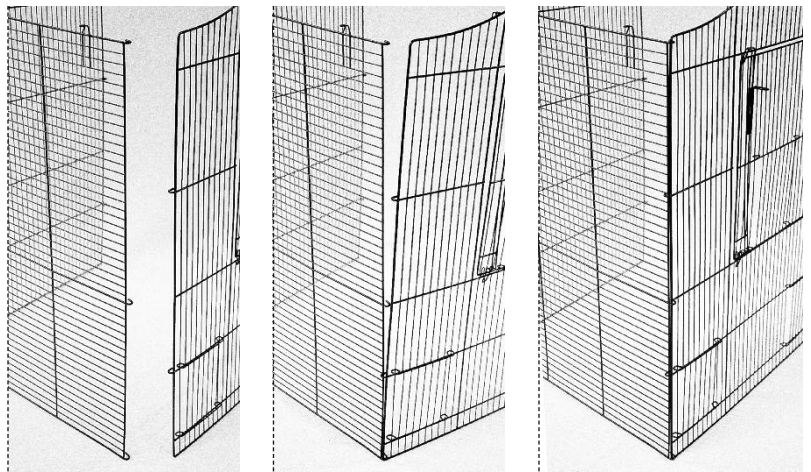


## 3 Assemble the CAGE BODY:

Lace up the cage body seams by starting at the bottom:

- Catch the bottom hook of the side panel into the bottom corner of the front panel;
- Working up the seam, weave the mesh together with the alternating hooks on the two panels.

Use the same method for the opposite corner seam.



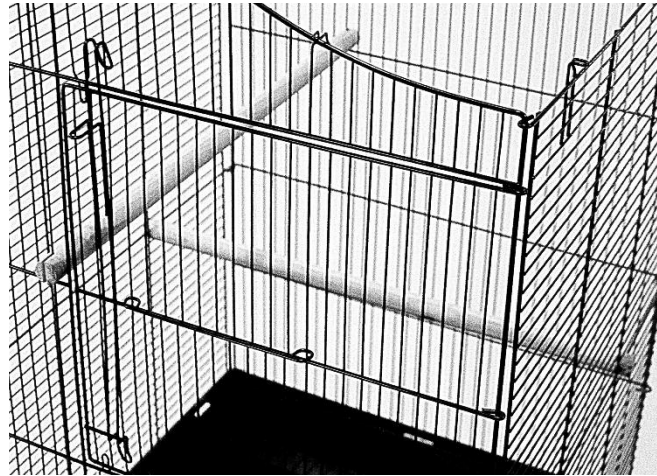
## 4 Add the cage body to the base/stand unit from Step 2:

Set the cage body into the base. Catch the bottom wire of the cage body under all five tabs around the base rim.

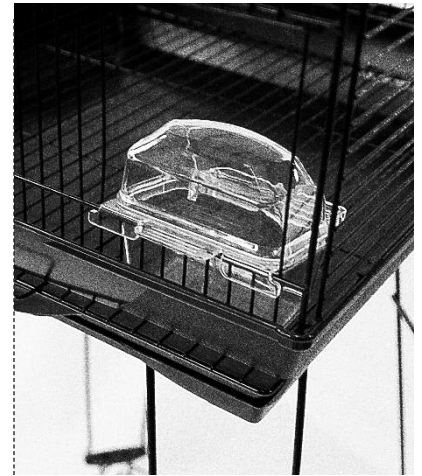


## 5 Add the **COMPONENTS**:

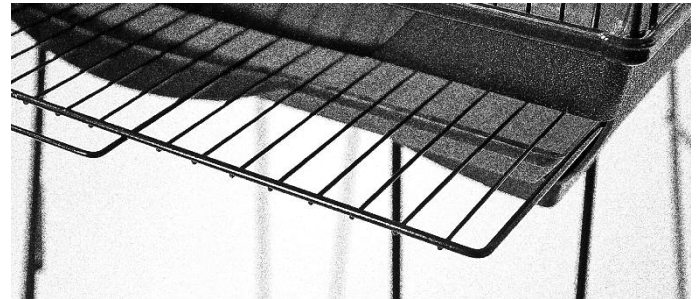
Add the **perches**. When a perch is installed front-to-back, make sure the base of the perch rests on a horizontal wire for stability.



Assemble the 2-piece **food/water cups** and insert them into the cup doors.

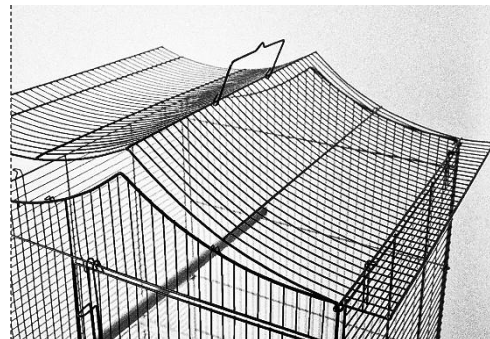
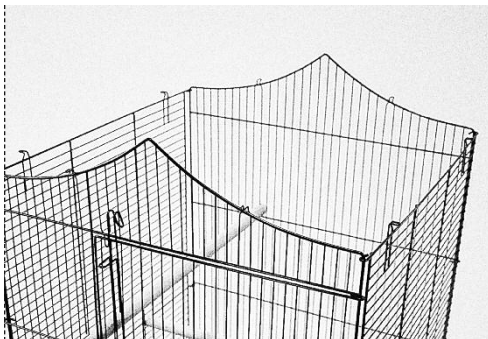


Insert the **tray and grille**. Orient the grille with the thinner front-to-back floor wires facing down.



## 6 Assemble the **ROOF**:

Starting on one side, catch the roof on the side panel loops and weave the roof onto the loops along the roofline.



Finish anchoring the roof in place with the loops on the opposite side panel.

