



# Adult Ferret Home /Travel Carrier

Instructions online at [www.prevuepet.com](http://www.prevuepet.com)

## CUSTOMER SUPPORT

For assistance or replacement parts, please contact Prevue Pet Products:

**PHONE** 1 (312) 243-3624

**ONLINE** [www.prevuepet.com](http://www.prevuepet.com)

**EMAIL** [customerservice@prevuepet.com](mailto:customerservice@prevuepet.com)

**TOOLS NEEDED :** Pliers for crimping • For best results, follow Assembly Steps in the order they are presented.

### KEY:

M = Mesh

P = Platform

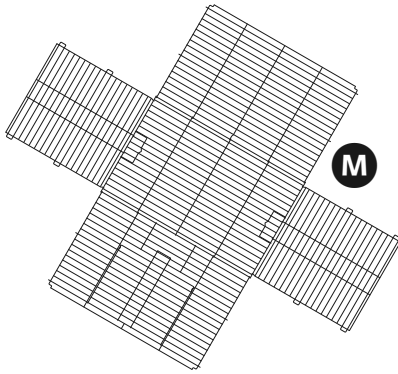
B = Base

R1 = Ramp (long)

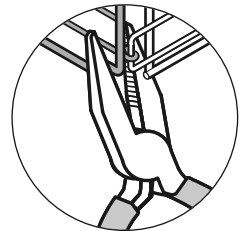
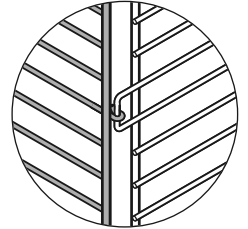
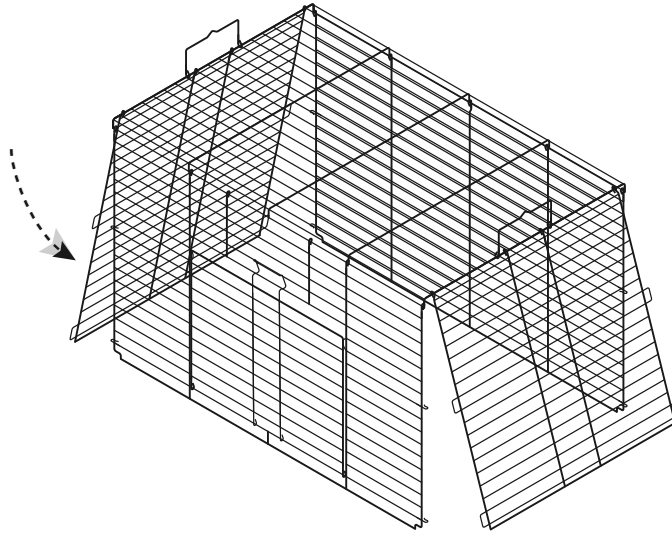
C = Clips

R2 = Ramp (short)

## 1 PIECES

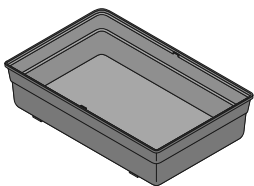


Fold all panels down to form a rectangle.  
Loop the hooked wire ends over the extended side-panel wires.

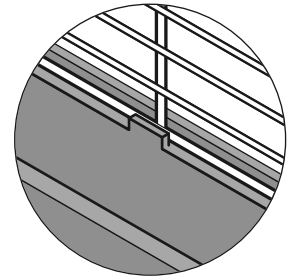
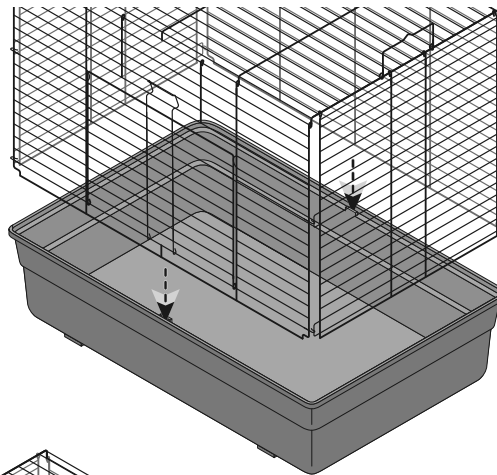


Crimp the hooks over the wires in all the corners to secure the mesh closure.

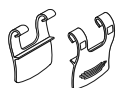
## 2 PIECES



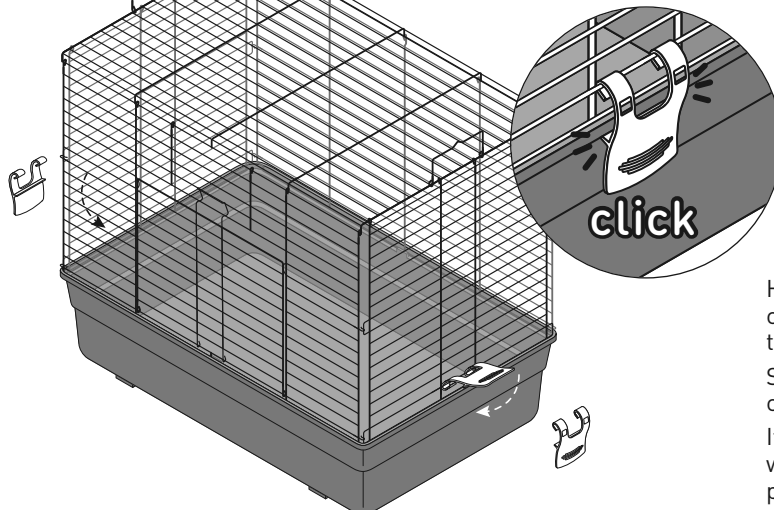
**B**



Set the mesh into the base. Align the mesh between the inner tab and the outer rim.



**C**

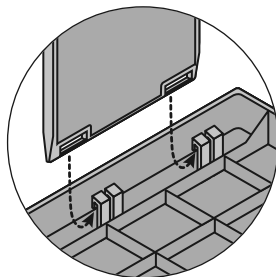
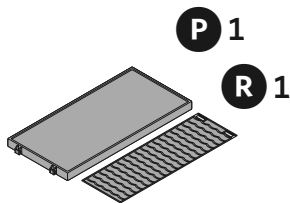


Hook the clip onto the cage mesh, between the two vertical wires.

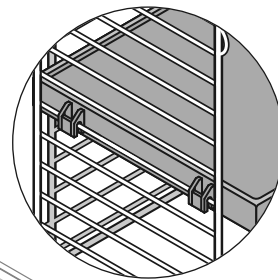
Swing the clip down and clip it onto the base.

It is installed correctly when it "clicks" into place.

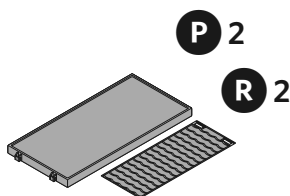
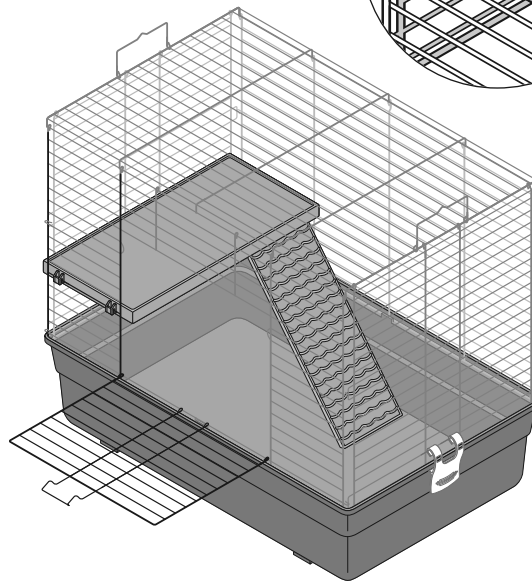
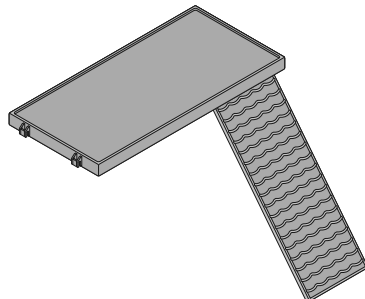
# 3 PIECES



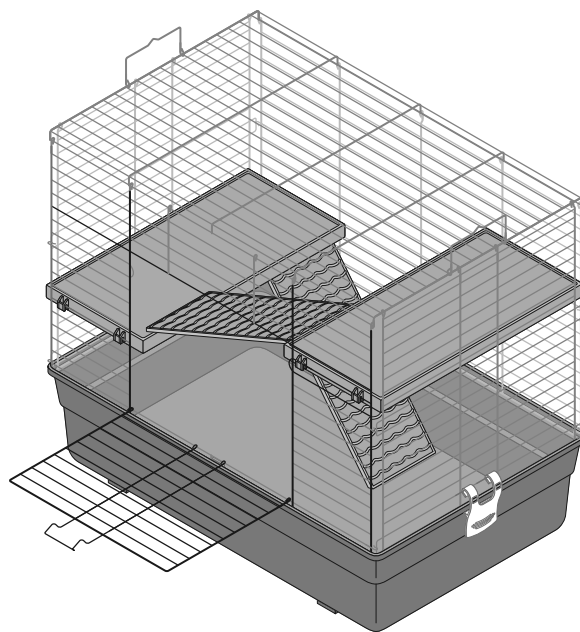
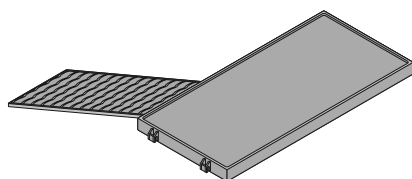
Link the long ramp onto the hooked posts on the underside of the platform.



Hook the platform tabs over the mesh wire, front and back.



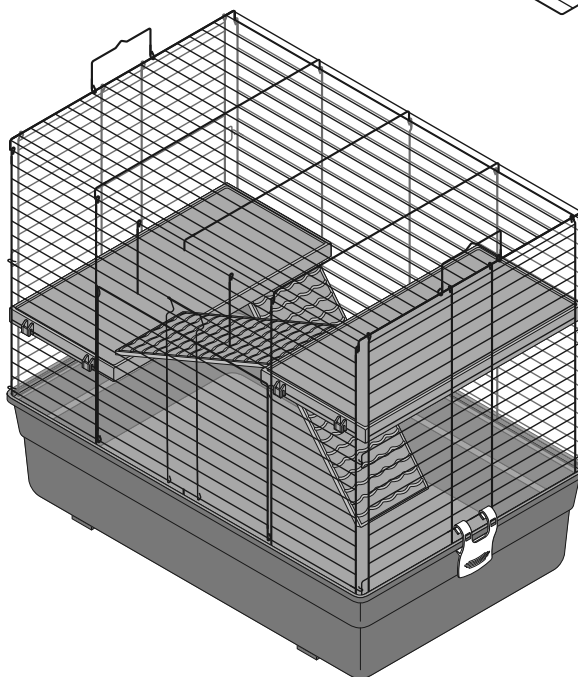
Link the short ramp onto the remaining platform.  
Install the second platform higher than the first, bridging the platforms with the ramp.



## CLEANING:

To prolong the life of your new Prevue Pet Products cage, we recommend:

- When cleaning the cage and parts, use a soft cloth or non-abrasive scrub pad (such as Prevue's #109 Cage Saver).
- Wash all parts with warm water and a mild, pet-safe, environmentally friendly soap.
- Rinse thoroughly.
- Hand dry all parts completely with a soft dry cotton cloth before reassembling the cage.
- Do not leave plastic parts in the sun to dry as they may warp.



Assembly completed. ■