



Flight Cage ASSEMBLY

Instructions online at www.prevuepet.com

CUSTOMER SUPPORT

For assistance or replacement parts, please contact Prevue Pet Products:

PHONE 1 (312) 243-3624

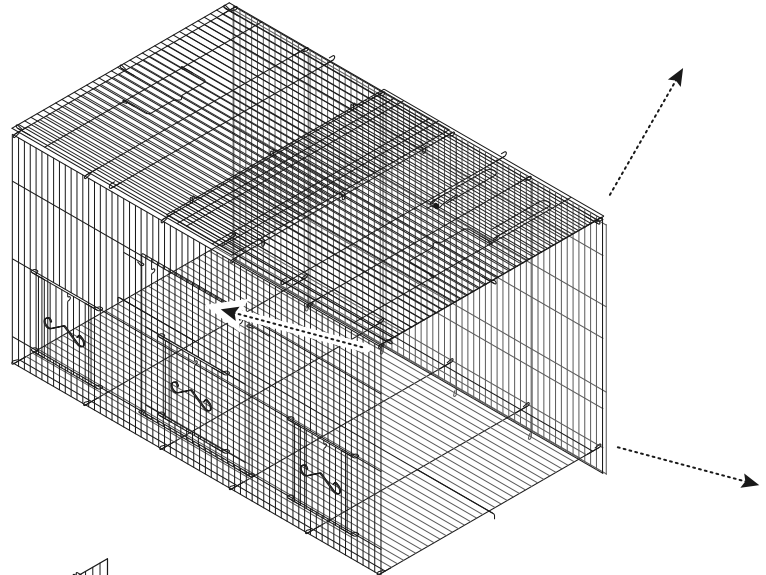
ONLINE www.prevuepet.com

EMAIL customerservice@prevuepet.com

For best results, please follow the Assembly Steps in the order presented.

1

The one-piece cage mesh is folded flat for packaging and shipping. Open the main body of the cage mesh to create the shape.



2

Swing the end panels down and:

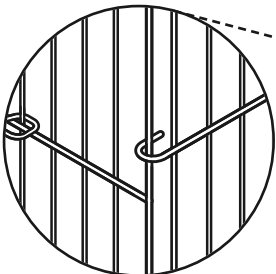
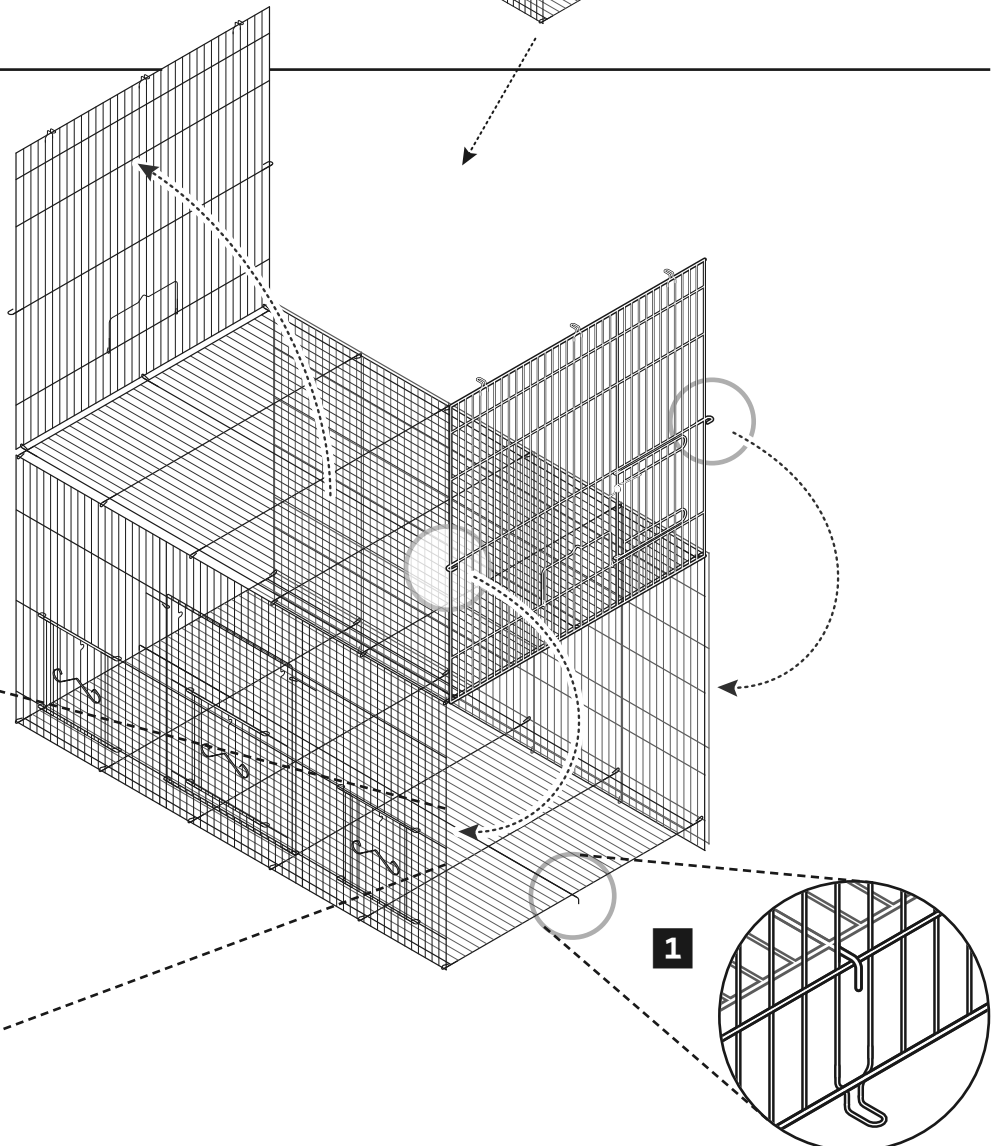
1

Catch the horizontal wire on the **side panels** under the downwards "L" wires on the **floor grille panel**;

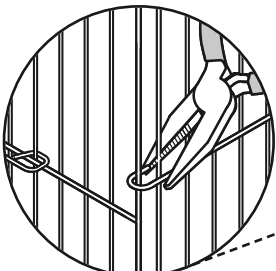
2

Catch the hooked ends over the **front panel**.

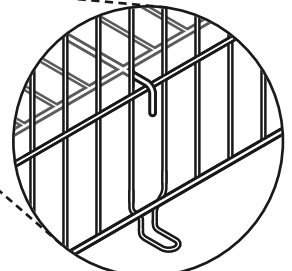
You may prefer to crimp these hooks tight with needle nose pliers to secure the cage ends.



2



1



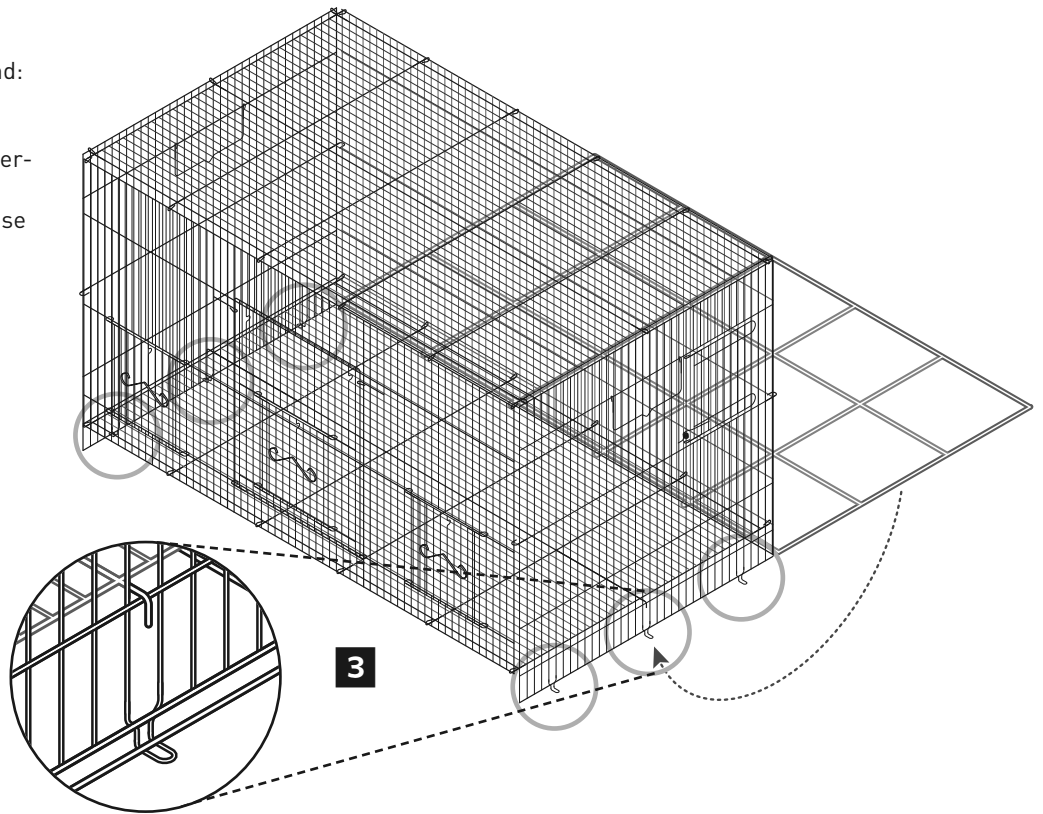
3

Swing the bottom panel down and:

3

Catch the three extended loops on the side panels under the outer-edge wires of the **bottom panel**.

You may also prefer to crimp these loops tight.

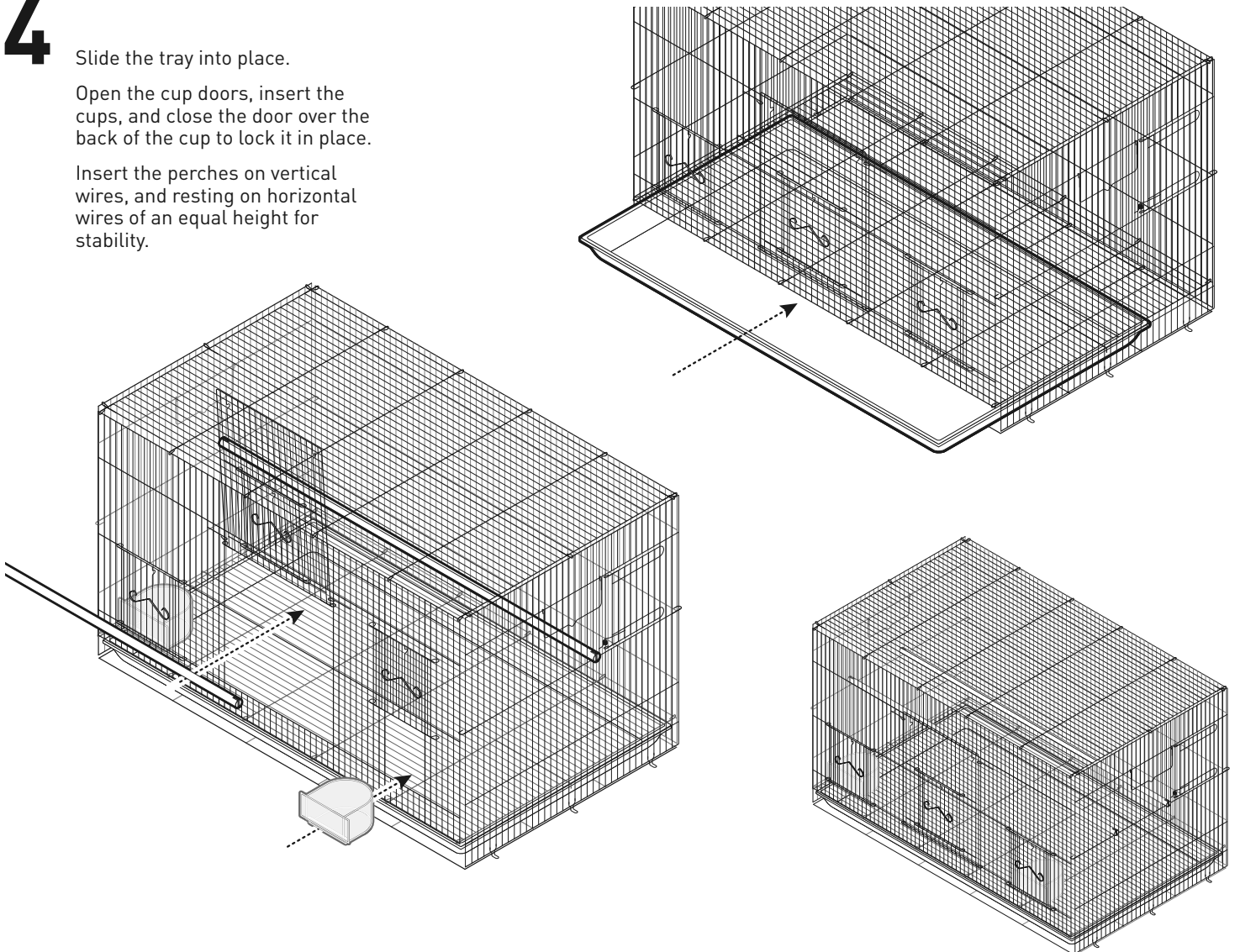


4

Slide the tray into place.

Open the cup doors, insert the cups, and close the door over the back of the cup to lock it in place.

Insert the perches on vertical wires, and resting on horizontal wires of an equal height for stability.



Assembly completed. ■