



Hamster Haven/large ASSEMBLY

Instructions online at www.prevuepet.com

CUSTOMER SUPPORT

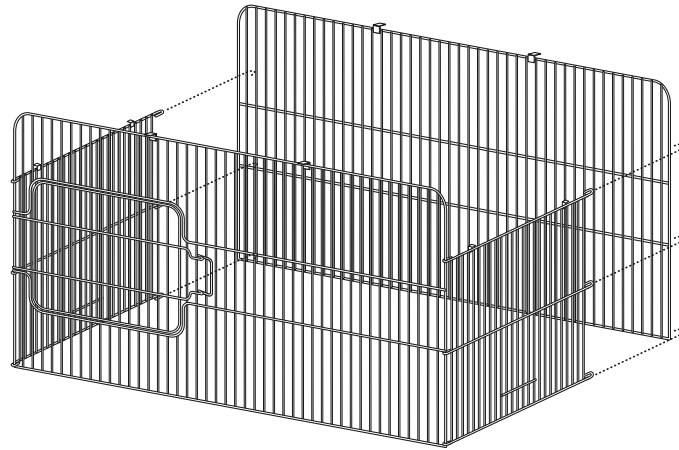
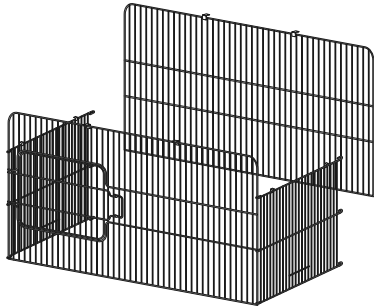
For assistance or replacement parts, please contact Prevue Pet Products:

PHONE 1 (312) 243-3624

ONLINE www.prevuepet.com

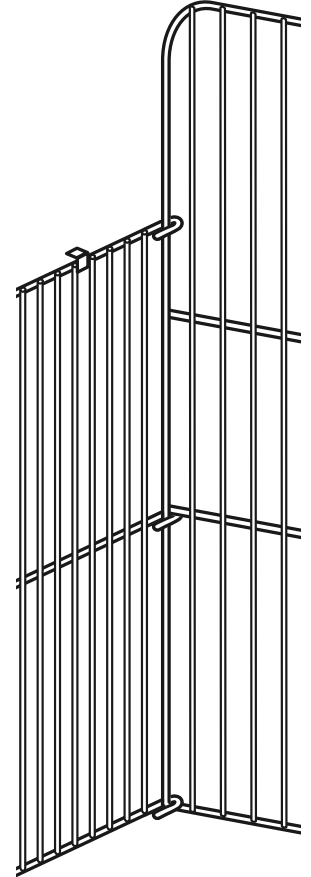
EMAIL customerservice@prevuepet.com

1 PIECES



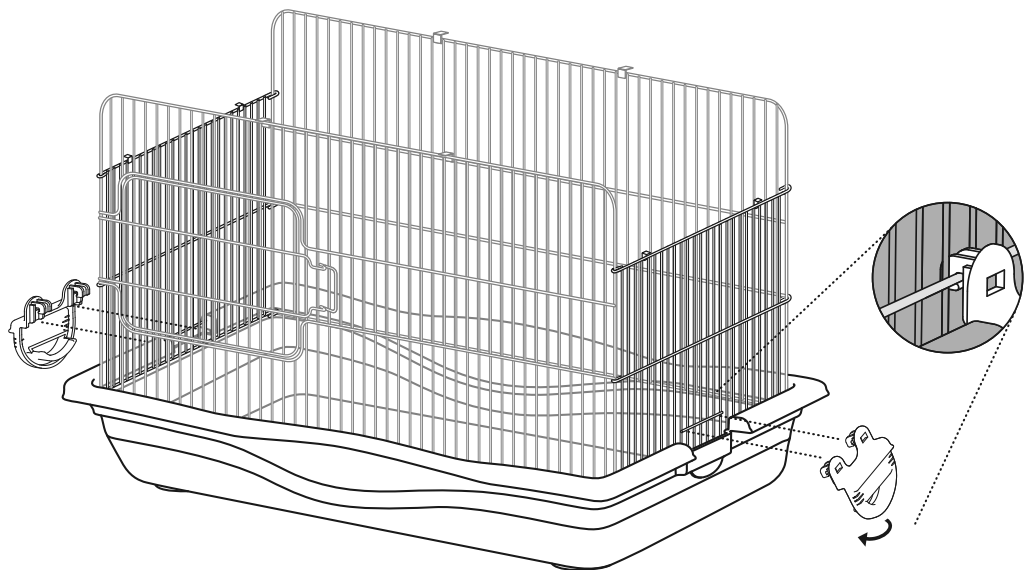
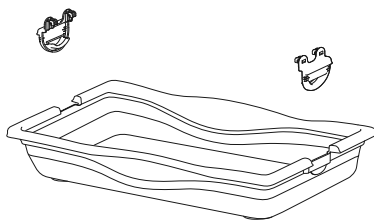
Starting from the bottom, pull the extended hooked wires of the side panel onto the back panel. The middle wire hooks under the corresponding horizontal wire on the back panel.

Link one complete seam together, then use the same method on the other seam to finish.



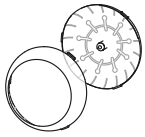
DETAIL OF INSIDE BACK, LEFT CORNER

2 PIECES



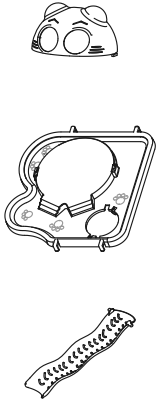
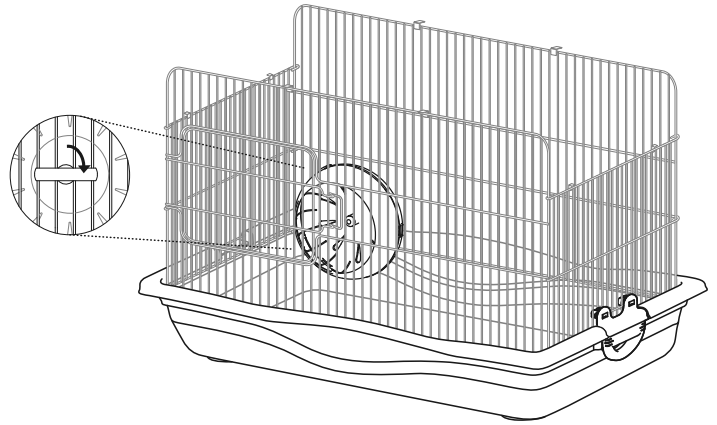
Set the assembled mesh into the base and attach with the clips. Hook the base clips onto the short horizontal wire on the side panel, and then clip it onto the base by pushing down until it "clicks".

3 PIECES

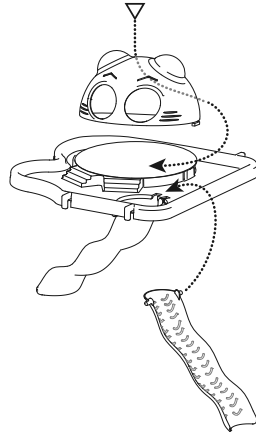


SNAP THE TRANSLUCENT WHEEL COVER ONTO THE BACK

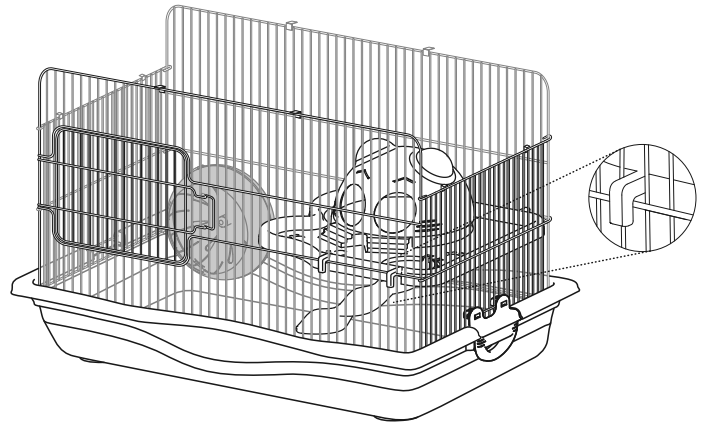
Position the wheel close to the base floor. Insert the handle on the back of the wheel through the cage wires. Rotate the handle 90° to secure the wheel.



Assemble the platform components by adding the slide, then centering the hideaway dome over the raised circle and rotating it into place with a "click".



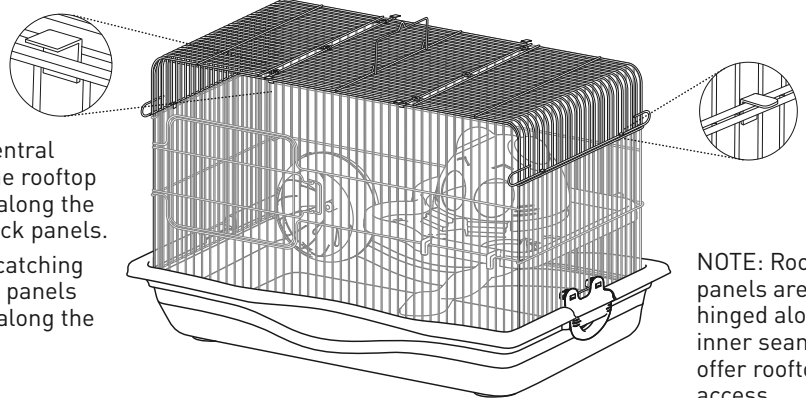
Install the platform into the cage.



4 PIECES



Catch the central portion of the rooftop on the tabs along the front and back panels. Finish with catching the roof end panels on the tabs along the side panels.



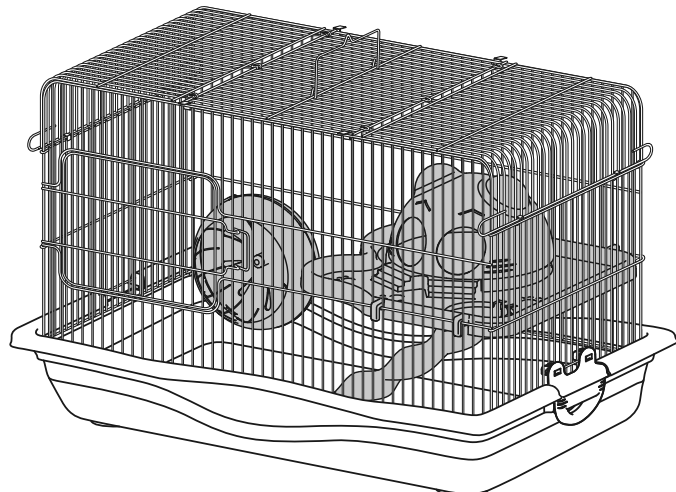
NOTE: Roof end panels are doors, hinged along the inner seams, to offer rooftop cage access.



CLEANING INSTRUCTIONS

To prolong the life of your new Prevue Pet Products cage, we recommend:

- When cleaning the cage and parts, use a soft cloth or non-abrasive scrub pad (such as Prevue's Cage Saver (#109)).
- Wash all parts with warm water and a mild environmentally friendly, pet-safe soap.
- Rinse thoroughly.
- Hand dry all parts completely with a soft dry cotton cloth before reassembling the cage.
- Do not leave plastic parts in the sun to dry as they may warp.



Assembly completed.